

Parking Guidance Equipment System Control Unit

System Control Unit Model : VGS-SCU



Main Functions

Receive parking surface data collected from Local Control Unit and parking information for each parking surface and transmit the result of operation on the parking available quantity to the installed LED display board in real time and transmit the information on parking status to server

Equipment Specifications

Input voltage : AC 85 ~ 265V(47 ~ 63Hz)

Workable Temperature : -25℃ ~ 75℃

Operating humidity : 90% 이하(결로가 없을 것)

Appearance material : SPCC 1.0(분체도장)

Communication method : RS485(Multi-Drop)Local Control Unit, RS485(Multi-Drop)

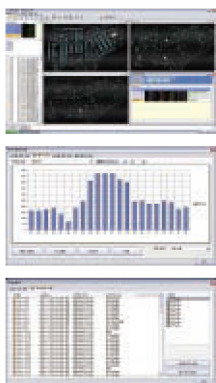
Entrance full direction board , TCP/IP - Parking Guide Server

Equipment Installation Image



Parking Guidance Equipment Parking Guide Server

Parking Guide Server Model : VGS-PGS



Main Functions

DATA record received from System Control Unit, comprehensive management and control of each equipment in the parking lot

Provide information to entrance guide LED Display Board, floor guide LED Display Board, local guide LED Display Board, Control management

Mark the status graph of various parking lots

Function to check long-term parking status image by MAP management

Provide data for parking management in real-time

Equipment Specifications

Processing device : intel CORE i7-3770 Processor(3,40GHz, 8MB)

Memory : 8GB(DDR3 1600 MHz)

Hard Disk : 1TB

O.S : 한글 Windows7 Professional 이상

Perform various tasks : Multi-Tasking function

Monitor : 23-inch LED or larger

Equipment Installation Image

